



## 180 GSM

- Set-in sleeve
- 1x1 rib at neck collar
- Inside back neck tape in self fabric
- Narrow twin needle topstitch at sleeve cuff and hem

Shell - Single Jersey  
100% Cotton - Organic Combed Ring Spun / Heather Haze: 70% Organic Cotton -  
30% Recycled Cotton, Combed Ring Spun - , 180.0 GSM  
Fabric washed







Weaving : Bangladesh  
Dyeing : Bangladesh  
Assembly : Bangladesh



All colours are GOTS certified except for Heather Haze, which is GRS certified.

Whites



White  
C001



Off White  
C018



Natural Raw  
C054

Colors



New

Viva Yellow  
C356



New

Lilac Dream  
C355



Black  
C002



Fraiche Peche  
C101



Blue Soul  
C149



Aqua Blue  
C145



Green Bay  
C144



Anthracite  
C253



Fiesta  
C143



Nispero  
C142



Purple Love  
C115



Bubble Pink  
C129



Misty Jade  
C735



Heritage Brown  
C730



Khaki  
C223



Stargazer  
C702



Blue Ice  
C728



Worker Blue  
C088



French Navy  
C727



Lavender  
C063



Red  
C004



Burgundy  
C244



Cotton Pink  
C005

Essential Heathers



Cool Heather Grey  
C146



Heather Haze  
C731



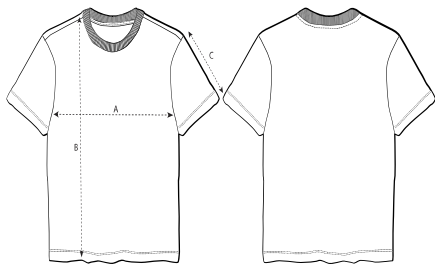
Heather Grey  
C250

Special Heathers



Eco Heather  
C147

Size Guide



| Sizes |               | XS   | S    | M    | L    | XL   | XXL  | 3XL  |
|-------|---------------|------|------|------|------|------|------|------|
| A     | Half Chest    | 45   | 48   | 51   | 54   | 57   | 61   | 65   |
| B     | Body Length   | 56.5 | 59.5 | 61.5 | 63.5 | 65.5 | 67.5 | 69.5 |
| C     | Sleeve Length | 18   | 18.5 | 19   | 19.5 | 20   | 20.5 | 21   |

Packing

| Sizes      |  | XS  | S   | M   | L   | XL  | XXL | 3XL |
|------------|--|-----|-----|-----|-----|-----|-----|-----|
| Pieces/bag |  | 5   | 5   | 5   | 5   | 5   | 5   |     |
| Pieces/box |  | 100 | 100 | 100 | 100 | 100 | 100 |     |